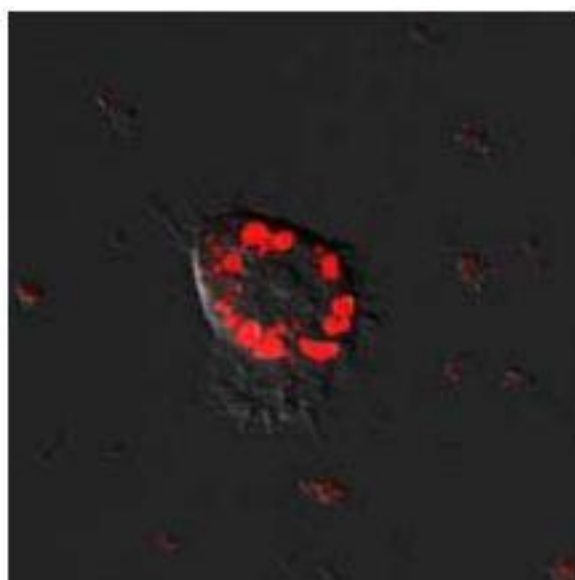


TAMRA-(BETA)-amyloid (1-42)

This product is β -amyloid labelled N-terminus with fluorophore Carboxytetramethylrhodamine (TAMRA). Amyloid-beta ($A\beta$) is peptides of 36 - 43 amino acids that are crucially involved in Alzheimer's disease as the main component of the amyloid plaques found in the brains of Alzheimer patients. It is useful for research of neurodegenerative disease such as Alzheimer's disease.



GIP (Total) ELISA

This ELISA kit is used for quantitative determination of rat total GIP in plasma and culture medium supernatant. The kit is characterized by its sensitive quantification and high specificity. In addition, it has no influence by other components in samples. GIP standard is highly purified synthetic product.

- The assay is completed within 2hr+1hr+0.5hr.
- With one assay kit, 40 samples can be measured in duplicate.
- Test sample: Rat plasma (EDTA-2Na) and culture medium supernatant, Sample volume: 50 μ L