

Eicom produces two types of HPLC-Electrochemical Detector (ECD) systems:

The **HTEC-510** is a stand-alone HPLC-ECD system. All -online degasser, pump, ECD and temperature controller- are in one cabinet.

The **700 Series** is a component system.



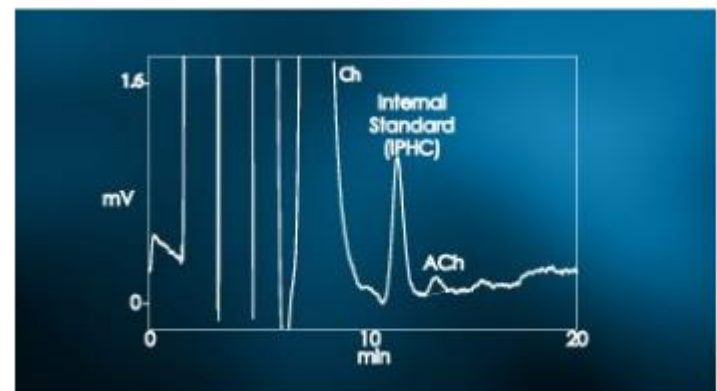
HPLC-ECD, HTEC-510



HPLC-ECD Component System, 700 Series



HPLC Autosampler "INSIGHT"



Applications



MICRODIALYSIS AND HPLC-ECD

- Acetylcholine
- Dopamine and Serotonin
- Norepinephrine, Dopamine, Serotonin
- Rapid GABA Analysis
- Glutamate and GABA
- Glutamate Enzymatic Analysis

HPLC-ECD AND OTHER

- Catecholamine Analysis
- Coenzyme Q10 & Vitamin K
- Glutamate and GABA
- Glutamate Enzymatic Analysis
- Thiols Detection

