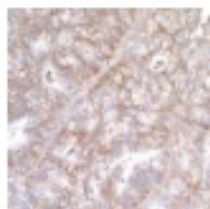


Bethyl has applied B-cell sorting and recombinant DNA technology to our unparalleled on-site manufacturing process to deliver high quality recombinant rabbit monoclonal antibodies (RmAbs). Via our powerful screening process, we are able to search through thousands of clones to find the very best antibody candidates and submit them to rigorous testing to provide you with confidence in your results. Our advantages include:

- Clonal
- Sensitive
- Specific
- Validated
- Reproducible

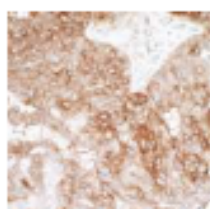
Designed with a 100% guarantee to work in validated applications to ensure that you spend less time re-doing experiments and more time researching.

Some examples below:



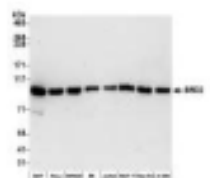
B7-H3/CD276 Recombinant Monoclonal Antibody [BLR026F]

Reactivity: Human
Applications: WB, IP, IHC, ICC
Immunogen: recombinant protein representing the extracellular domain of human CD276 Molecule



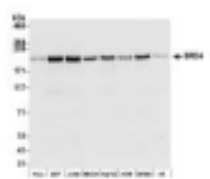
B7-H4 Recombinant Monoclonal Antibody [BLR043F]

Reactivity: Human
Applications: WB, IP, IHC, ICC
Immunogen: recombinant protein representing the extracellular domain of human OX40



BRD2 Recombinant Monoclonal Antibody [BL-167-2A2]

Reactivity: Human
Applications: WB, IP
Immunogen: Between 675 and 725



BRD4 Recombinant Monoclonal Antibody [BL-149-2H5]

Reactivity: Human
Applications: WB, IP, IHC, ICC-IF, ChIP-Seq
Immunogen: Between 1312 and 1362