

TrueBlot® product line enables researchers to generate publication quality data.

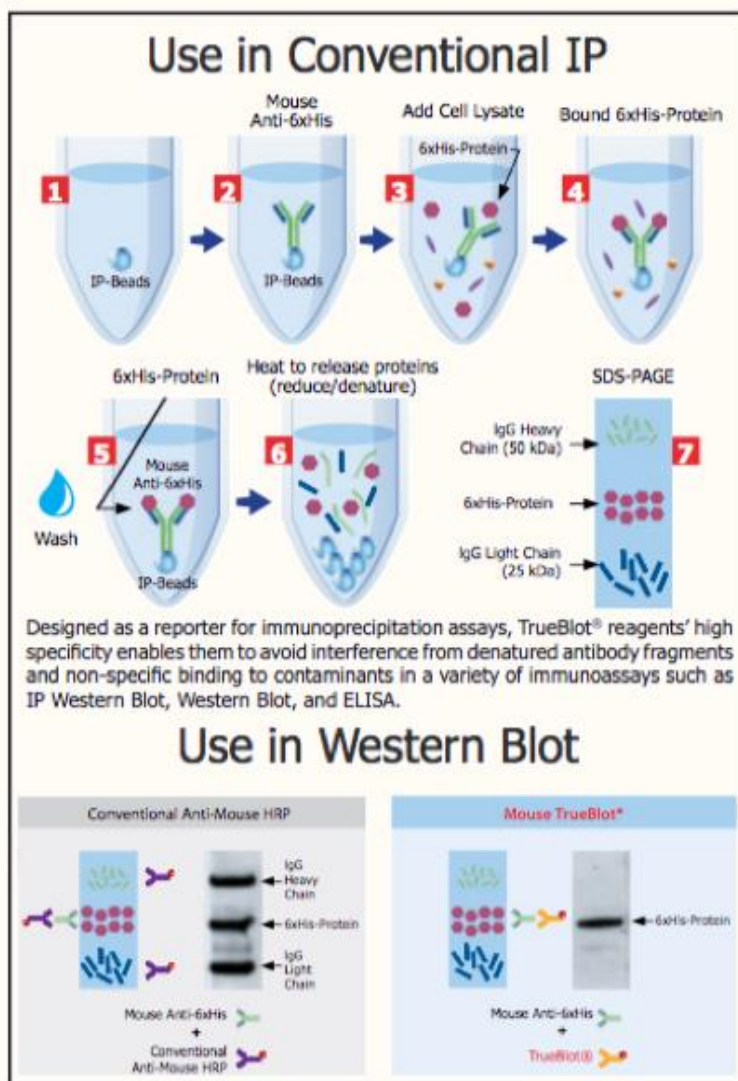
Western Blotting/IP/ELISA

TrueBlot® reagents enable you to generate clear, best-quality data in your immunoprecipitation and western blot protocols. Available in several options, from IP beads, to complete kits for IP/Western Blot, ELISA, or IHC.

TrueBlot® Kits contain critical supporting reagents, buffers, and substrates for immunoprecipitation and western blotting.

TrueBlot® Epitope Kits	Application	Catalog No.
IP & WB Kit for GFP Epitope Tag	IP/WB	88-8887-215
IP & WB Kit for 6X HIS Epitope Tag	IP/WB	88-8887-382
IP & WB Kit for DYKDDDDK (FLAG®) Epitope Tag	IP/WB	88-8887-383

- Detects the native disulfide form of IgG, making it ideal for protocols involving immunoblotting of immunoprecipitated proteins.
- Reduces interference by the ~55 kDa heavy and ~23 kDa light chains of the immunoprecipitating antibody in IP/immunoblotting applications, making Phospho Immunoprecipitation Western Blot data even more accurate.
- Ideal for studying post-translational protein modifications, including phosphorylation, or protein-protein interactions.



Fluorescent TrueBlot®



Fluorescent TrueBlot® combines the power and specificity of the original products with the versatility of fluorescent and near infra-red dyes. Conjugating highly optimized TrueBlot® reagents to a full spectrum of fluorescent labels, results in multipurpose reporter molecules that can be used in a variety of immunoassays.

