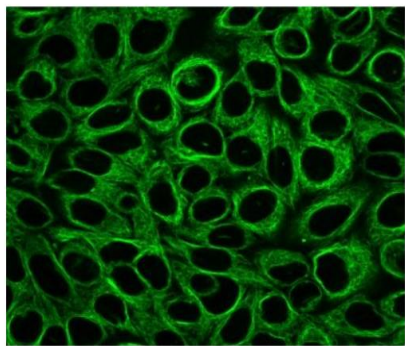
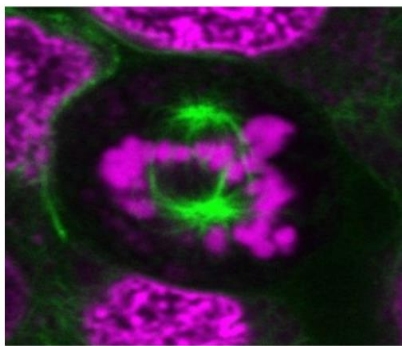


VIAFLUOR LIVE CELL MICROTUBULE STAINS



HeLa cells stained with 1X ViaFluor™ 488 Microtubule Stain for 30 minutes at 37C.

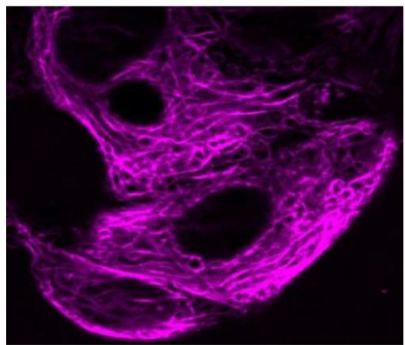


HeLa cell stained with ViaFluor™ 488 Microtubule Stain (green) showing mitotic spindle. DNA is stained with RedDot™ 1 (magenta).

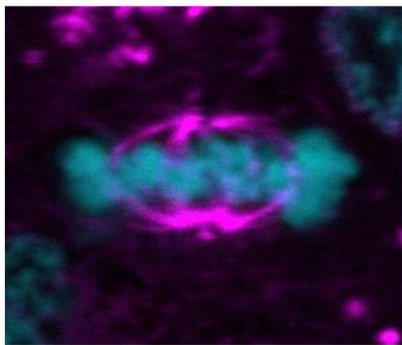
ViaFluor™ Live Cell Microtubule Stains are cell-permeable taxol probes for imaging the microtubule cytoskeleton in live cells. It is a simple, rapid and sensitive stain that can be imaged **without** a wash step.

ViaFluor™ 488 Microtubule Stain has green fluorescence (Ex/Em 500/515 nm) for imaging in the FITC channel.

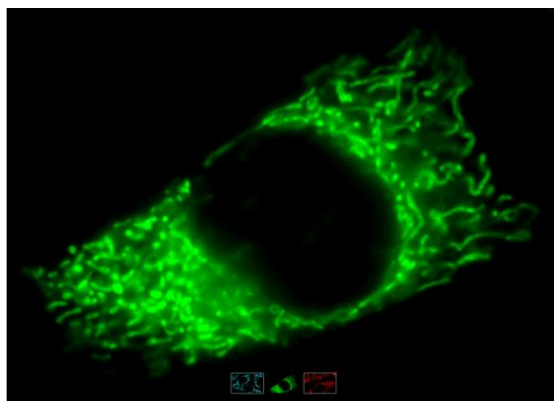
ViaFluor™ 647 Microtubule Stain has far-red fluorescence (Ex/Em ~650/~675 nm) for imaging in the Cy®5 channel, and is compatible with super-resolution imaging by STED.



MCF-7 cells stained with 2X ViaFluor™ 647 Microtubule Stain for 30 minutes at 37C.



HeLa cell stained with ViaFluor™ 647 Microtubule Stain (magenta) showing mitotic spindle. DNA is stained with Hoechst 33342 (blue) (catalog no. 40046).



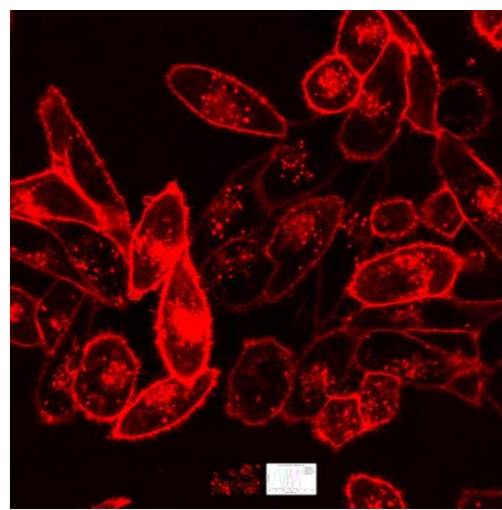
MITOVIEW DYES

MitoView™ dyes are available in three colors: MitoView™ Blue, MitoView™ Green, and MitoView™ 633.

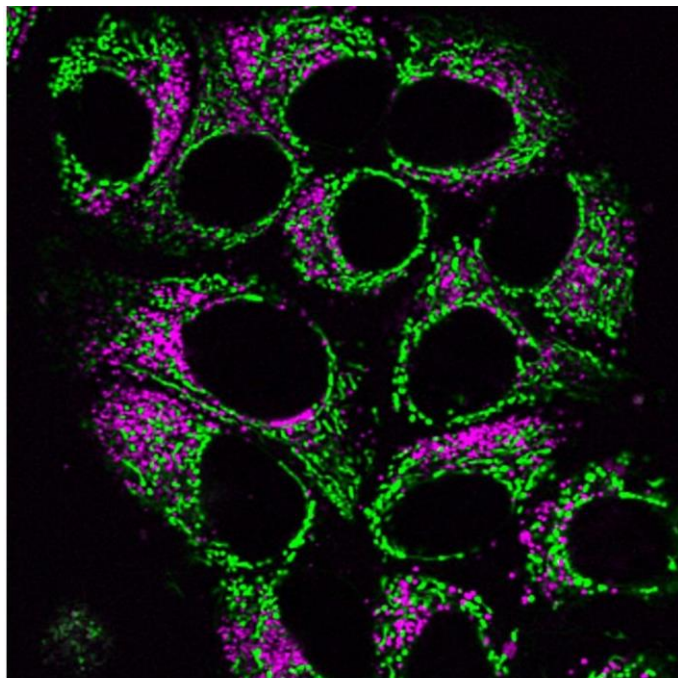
CELLBRITE CYTOPLASMIC MEMBRANE DYES

LYSOVIEW DYES

LysoView™ dyes label lysosomes in live cells, and are available in 3 dye colors: visible red LysoView™ 540, far-red LysoView™ 633, and far-red LysoView™ 650.



CellBrite™ Cytoplasmic Membrane Labeling Kits are designed to label cell cytoplasmic membranes with fluorescent dyes, available in blue, green, orange, and red. The labeling is stable and nontoxic, suitable for long-term tracking of cells. By combining multiple CellBrite™ Cytoplasmic Membrane Stains, one can label multiple cell populations with different colors for studies of cell-cell interactions.



5/5 Live HeLa cells stained with LysoView 650 (magenta) and MitoView Green (catalog no. 70054 green).