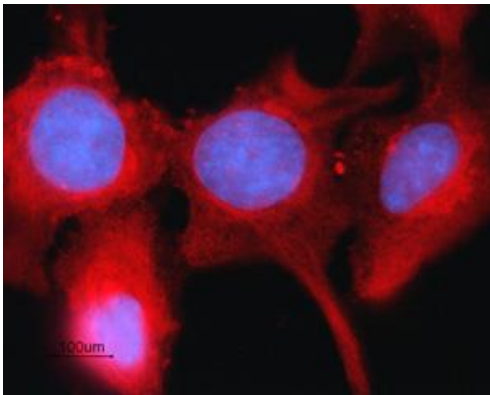


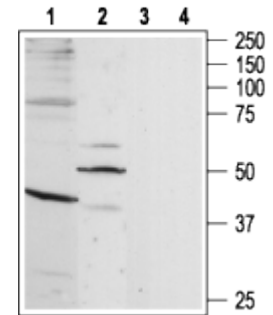
A Alomone é uma empresa especializada em anticorpos para canais, transportadores e receptores diversos. Possui ainda bloqueadores e ativadores.

Veja abaixo alguns exemplos:



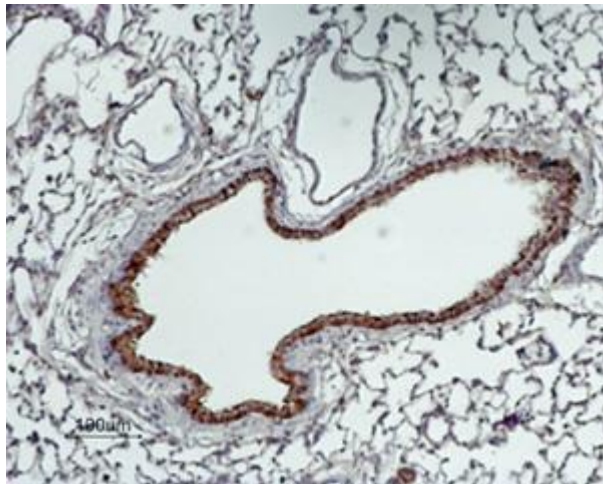
Expression of Connexin-43 in rat intestinal epithelial IEC-6 cells

Immunocytochemical staining of fixed and permeabilized rat intestinal epithelial IEC-6 cells. Cells were stained with **Anti-Connexin-43** antibody (#ACC-201), (1:200), followed by goat anti-rabbit-AlexaFluor-594 secondary antibody (red). Cell nuclei were visualized using Hoechst 33342 (blue)



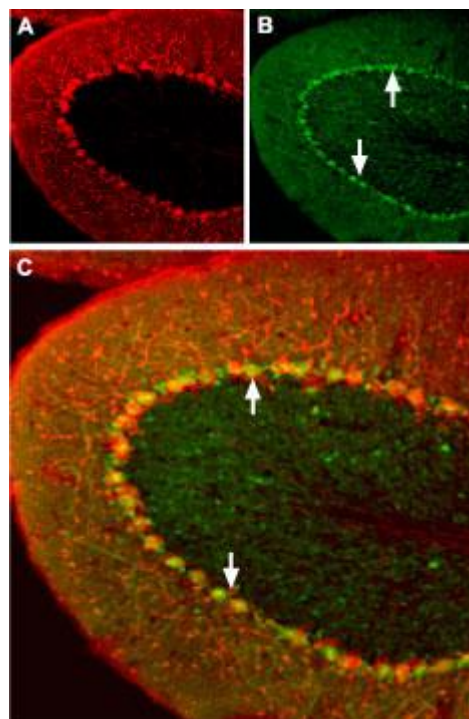
Western blot analysis of rat brain (1,3) and rat heart (2,4) lysates:

1. **Anti-B₁ Bradykinin Receptor** antibody (#ABR-011), (1:200).
2. **Anti-B₁ Bradykinin Receptor** antibody, preincubated with the control peptide antigen.



Expression of Angiotensin II Receptor Type-1 in mouse cerebellum

Immunohistochemical staining of mouse cerebellum using **Anti-Angiotensin II Receptor Type-1 (extracellular)** antibody (#AAR-011). A. Mouse anti-Parvalbumin (red) is detected in the Purkinje layer. B. In the same section, AT₁ receptor (green) is also present in the Purkinje layer. Arrows point at AT₁ receptor immunoreactive cells. Merge of A and B pannels reveals partial co-localization.



Expression of GABA Transporter 2 (GAT-2) in rat lung

Immunohistochemical staining of rat lung paraffin-embedded sections using **Anti-GABA Transporter 2 (GAT-2)** antibody (#AGT-002), (1:100). GAT-2 (brown) is expressed in the respiratory epithelium of the bronchioli. Hematoxilin is used as the counterstain.

Visite : www.alomone.com e peça-nos uma cotação vendas@sellex.com