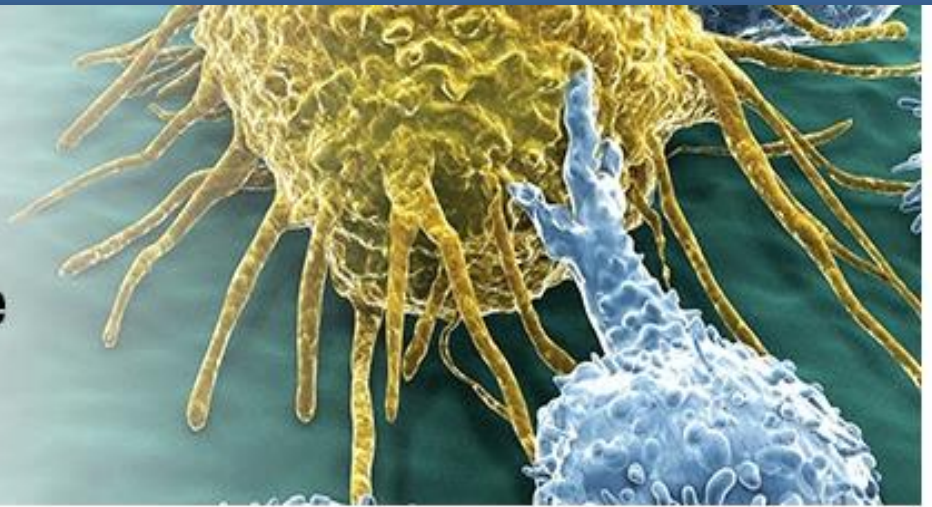


# Brilliant Violet™ 421 MHC Tetramers Now Available



## Just Launched!

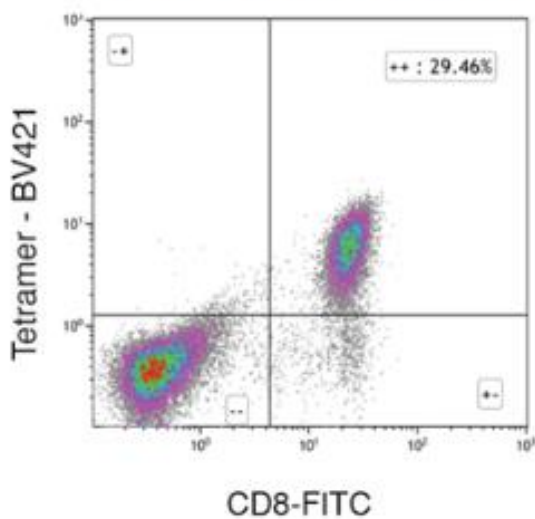
MBL International (MBLI) has developed high quality tetramer reagents, incorporating patented technology to reduce non-specific background, in combination with Brilliant Violet™ 421 (BV421)-conjugated streptavidin.

### WHY Brilliant Violet™ 421 MHC Tetramers?

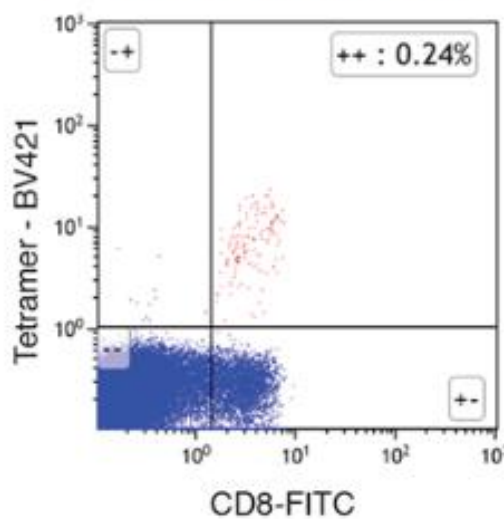
- Expanded T cell detection option off the 405 nm laser
- Low background fluorescence and a signal:noise ratio favorable for rare events detection
- Stable signal for at least five days post-fixation
- Can be used in conjunction with PE and APC tetramers in the same sample

### Available Alleles

**Detection of H-2 Kb OVA-specific CD8+ T cells in OT-1 splenocytes**



**Detection of HLA-A\*02:01 EBV-specific CD8+ T cells in PBMCs**



#### Human Class I Alleles

HLA-A\*01:01  
HLA-A\*02:01  
HLA-A\*03:01  
HLA-A\*11:01  
HLA-A\*24:02  
HLA-B\*07:02  
HLA-B\*08:01  
HLA-B\*15:01  
HLA-B\*27:05  
HLA-B\*35:0  
HLA-B\*57:01

#### Human Class II Alleles

DRB1\*01:01  
DRB1\*03:01  
DRB1\*04:01  
DRB1\*15:01  
DPB1\*04:01

#### Mouse Class I Alleles

H-2 D<sup>b</sup>  
H-2 K<sup>b</sup>  
H-2 K<sup>d</sup>

#### Rhesus Macaque Class I Alleles

Mamu-A\*01

#### Mauritian Cyno Macaque Class I Alleles

Mafa-A1\*063