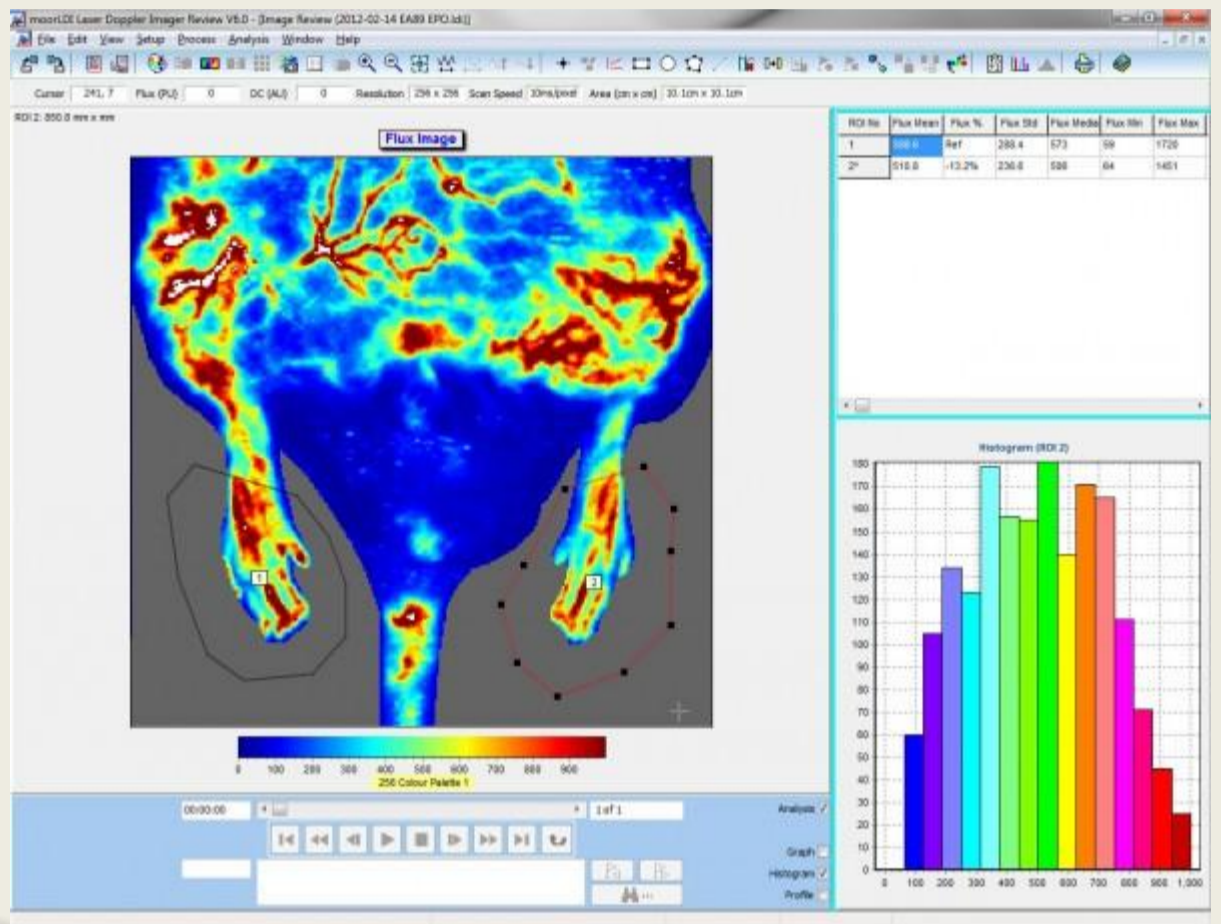
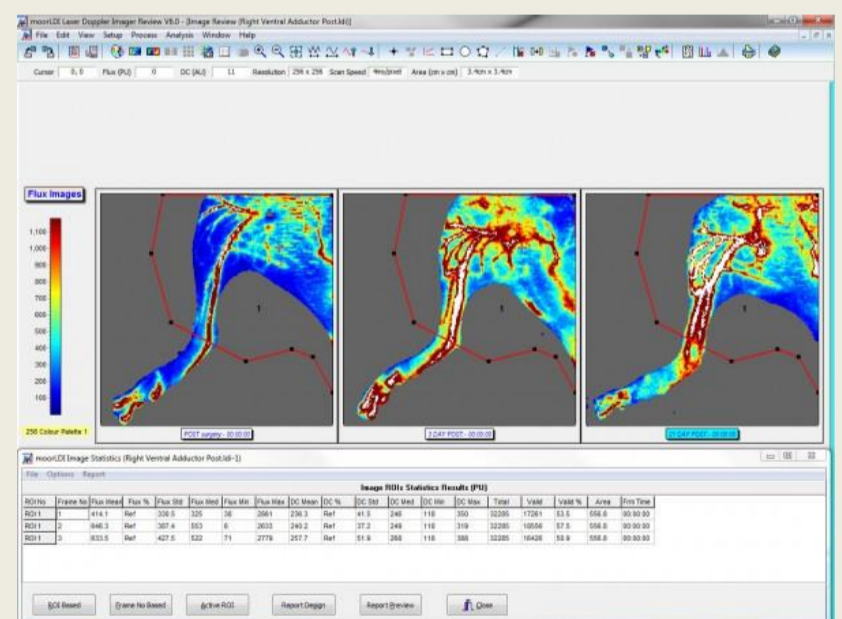


The **moorLDI2-HIR** is suitable for a wide range of pre-clinical research investigations, more typically where smaller areas are under investigation. The system features unique focused optics to provide 100 micron pixel size and 256 x 256 pixel resolution for high resolution blood flow images. The scan areas range from just 2.5cm x 2.5cm up to 25cm x 25cm with scan times typically less than 5 minutes.



Optimal for Angiogenesis Studies:

- Hind limb ischemia
- Tumour modelling
- Pre-clinical cerebral blood flow imaging



NOTE: If you are interested in clinical research and larger scan areas please consider the moorLDI2-IR large area imager or the moorFLPI-2 laser speckle imager.