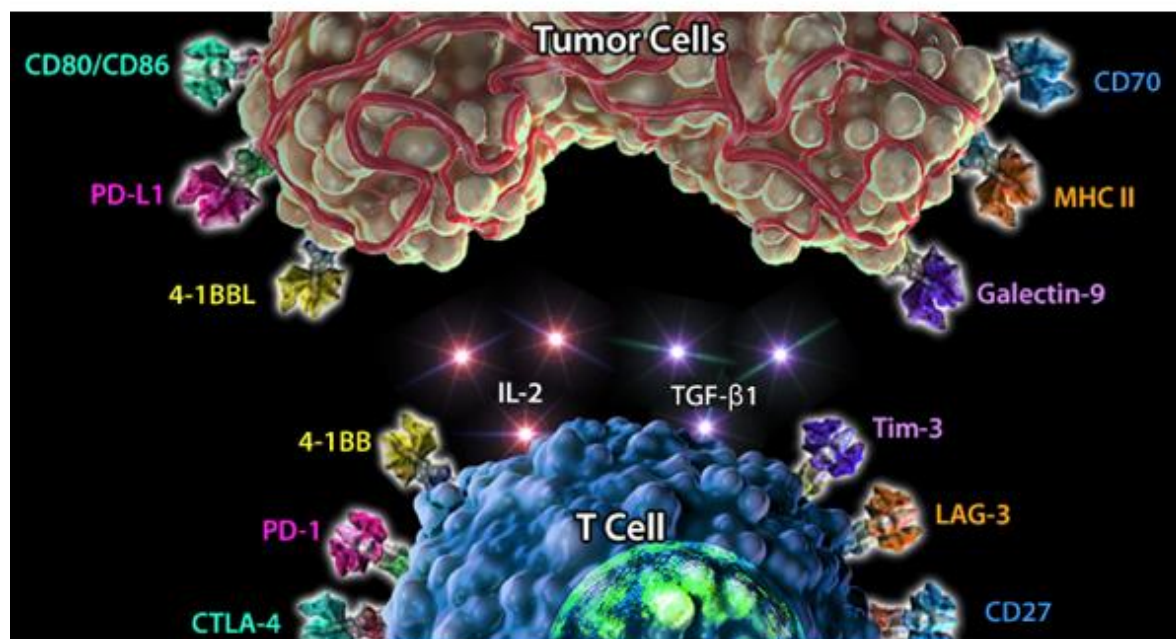


Immune checkpoint molecules are critical in preventing autoimmunity and regulating the immune response; however, cancer cells are able to exploit these checkpoints to suppress anti-tumor responses. Study immune checkpoints using our newest LEGENDplex™ kit, which allows you to simultaneously quantify expression levels of 12 important oncology-related checkpoint biomarkers.



## HUMAN IMMUNE CHECKPOINT PANEL

Panels	Filter Plate	V-Bottom Plate
Immune Checkpoint Panel 1- Tissue Culture (12-plex)	<a href="#">740866</a>	<a href="#">740867</a>
Immune Checkpoint Panel 1- Serum/Plasma (10-plex)	<a href="#">740961</a>	<a href="#">740962</a>
Immune Checkpoint Panel 1- Serum/Plasma (2-plex)	<a href="#">740963</a>	<a href="#">740964</a>

Targets Analyzed by the 12-plex kit:	
4-1BB	PD-1
B7.2 (CD86)	PD-L1
CTLA-4	PD-L2
Free Active TGF-β1	sCD-25 (IL-2Ra)
Galectin-9	sCD27
LAG-3	Tim-3